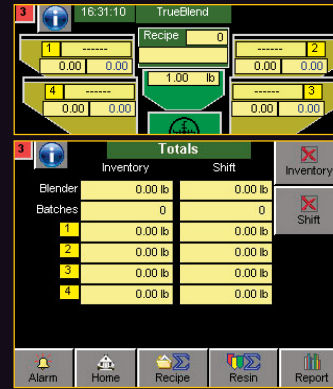


TrueBlend Component Setup

The material component values for a batch are entered as percentages. The “TrueBlend Home” and “TrueBlend Totals” screens show the various material hoppers with the factory material assignment.

The material types in the hoppers can be changed. The outer number in the hoppers shows the set value for the batch in % (TrueBlend Status).

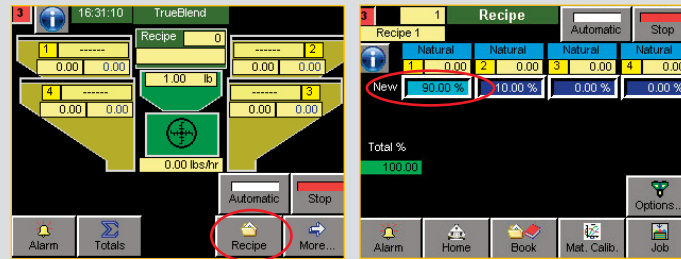
Press the Recipe button make the following settings for all components:



Input Material Percentages

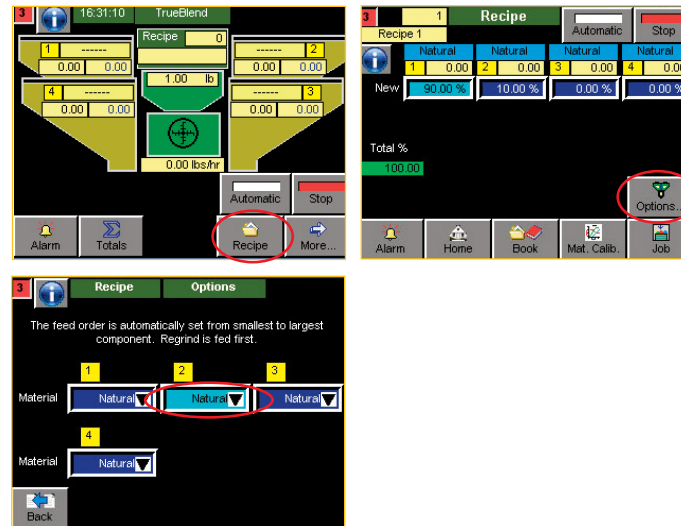
- 1 Press the Recipe button to input the percentage for each material component.
- 2 Input the value with the numeric keypad, on the “new” line.
- 3 Confirm the value with .

>>> NOTE: If using multiple naturals, they must equal 100%.



Input Material Type

- 1 Press the Recipe button to move to the Recipe screen.
- 2 Press the Options button to move to the Options screen.
- 3 Input the type of material in each supply hopper. If no material will be in this hopper, material type can be ignored.
- 4 Note that factory settings are as follows: position 1=Reg.; position 2=Nat.; position 3=AddN; position 4=AddN; position 5 (if applicable)=Off; position 6 (if applicable)=Off.



Operation & Setup

Quick Card

QCB005-0113

TrueBlend Gravimetric Blender SB-2 Control



Operation

To Start Blending

- 1 Turn on main power to the blender. Wait for the Home screen to be displayed.
- 2 Press the Automatic button to start the blending process automatically. The blender will use the last set of values or the factory settings. The button will now display a green bar.



To Stop Blending

- 1 Press Stop to stop metering the mixing process. The button changes to display a flashing red bar. The current batch will run until finished. When finished, the button will display a solid red bar.



>>> NOTE: The bar will remain flashing red until the batch of material has been completed. The batch will not dump until there is sufficient room in the weigh bin and the level sensor is exposed. A yellow bar on the screen next to the mixer indicates that the mixing chamber is full and that the weigh bin has no place to put the current batch until the material level in the mix chamber is lowered.

WARNING: This card provides only basic troubleshooting and maintenance information. Users must be familiar with all safety information and procedures described in the TrueBlend User Guide.



Corporate Office: 724.584.5500
 Instant Access 24/7 (Parts and Service): 800.458.1960
 International: 814.437.6861 • www.conairgroup.com

The TrueBlend control panel

Security Operating level

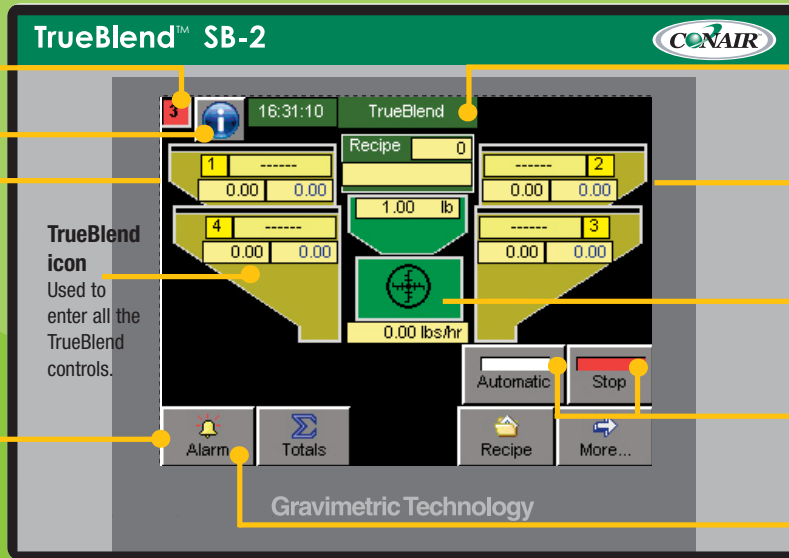
Help screens

Touchscreen

Used to make selections, navigate through screens, view information, and enter settings.

Navigation buttons

Includes the Settings, Help, Totals, Recipe, Alarm, Back, and Home buttons. These are used to navigate through the screens.



Control screen level

Indicates which screen is currently displayed.

Home screen

Used as an overview of the blender's operation.

Live action display

Displays what is currently happening with the blender. The mixing chamber visually displays mixing, dumping, and loading.

Automatic and Stop

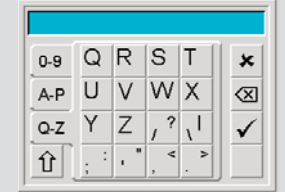
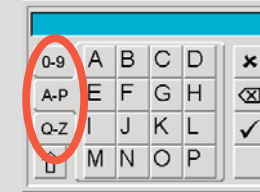
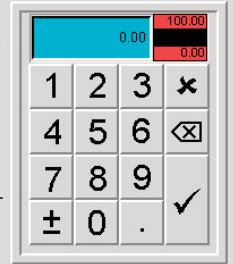
Used to start and stop the blender.

Alarms

Shows an alarm status.

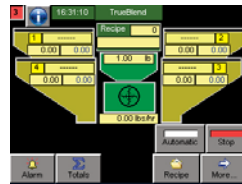
Using the keypad

When using the controller, at times you are prompted to input numbers or words. When a numeric or alphabetical keypad opens, you can make your inputs. Note that the alphabetical keypad is divided into two sets. Use the tabs at the left of the screen to choose between numbers, the first half of the alphabet, and the second half of the alphabet.

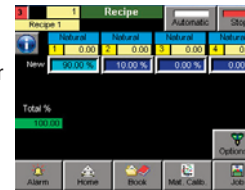


Navigating the controls

Home
Press this button to return to the home screen. This button is visible on all screens except Home.



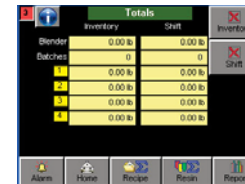
Recipe
Press this button to adjust or replace associated settings on the Recipe screen.



System Setup Menu
From the Home screen, press More then Setup to open a screen that enables access to various settings.



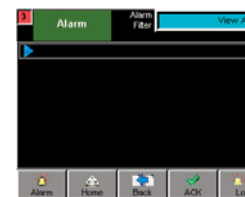
Totals Screen
The associated settings are called from the Loader status screen and all other loader screens.



Back Button
Press the back button on any screen to return to the previous screen.

Help Button
Press this button to find information on specific functions.

Alarm Overview Screen
In the event of an alarm message, press this button to gain direct access to the alarm overview.



Explanation of additional screen icons

Scroll

Press the plus or minus to scroll forward and back. This is used for components or with settings for setup.



Alarm Display

In the event of an alarm, the Alarm button illuminates. The alarm priority can be set to specify how the unit behaves when an alarm occurs.



Operating Level

The operating level is shown at top left. There are four operating levels. The operating levels are 1, 2, 3, and 4.



Time and station name display

The top bar of the screen shows the current time and the station names. (Blender ID) The time and station name can be set in the Setup screen.



WARNING: This card provides only basic troubleshooting and maintenance information. Users MUST be familiar with all safety information and procedures described in the TrueBlend User Guide.