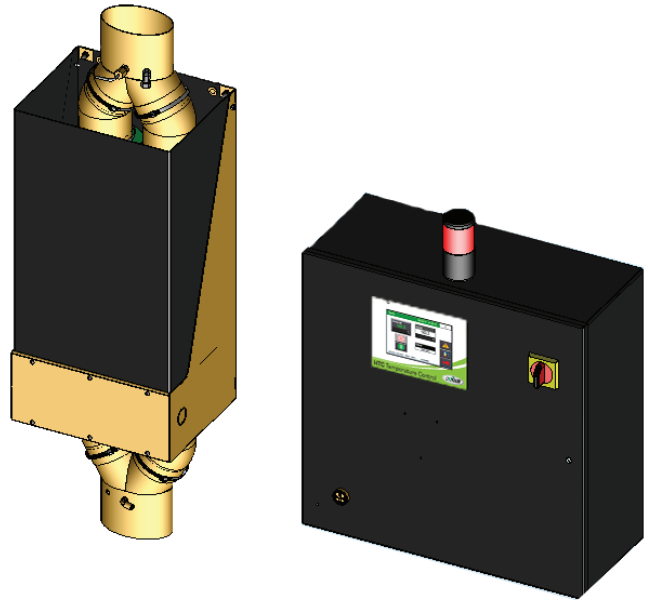


Precise Central Drying Control

Heat Boosters supply economical drying heat to individual drying hoppers for the most efficient material pre-conditioning system available. With a temperature range up to 350°F {178°C}, and a full complement of safety devices, Heat Boosters are exceptional for providing safe, precise temperatures for drying.

The Hopper Temperature Control (HTC) Heat Boosters now feature an icon-driven touch screen display that allows for additional helpful options. Would you like notification that your material is ready for processing? What about Temperature Setback control at the hopper? Perhaps best of all - what about Drying Monitor notifications and trending at each hopper? These great features and more are now available within the HTC.



Each **Hopper Temperature Controller** is equipped with a **Heater Box** (left) that connects directly to the drying hopper and a precision **control box with touch screen control**.

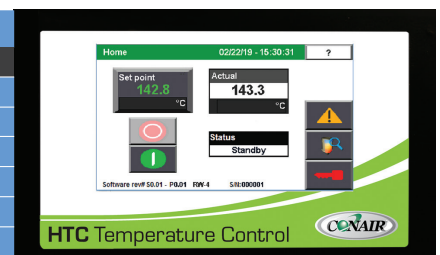
Fast Responding, Energy Efficient Heaters

The HTC Heat Boosters feature tube type heaters with fast responding, energy efficient, open-wire resistance heaters located within mica-lined stainless steel tubes. High temperature safety shut off protection is an integral feature of each HTC.

The HTC controls feature a lockable, fused disconnect switch, solid state heater contactor, isolation contactor for over temperature safety protection and a proportioning temperature controller. The temperature is monitored and controlled with a remote sensor located at the hopper air inlet. Drying temperature and setpoint are available at a glance. Temperature deviation faults, low airflow alerts, and other alarms are visible at the hopper and the dryer.

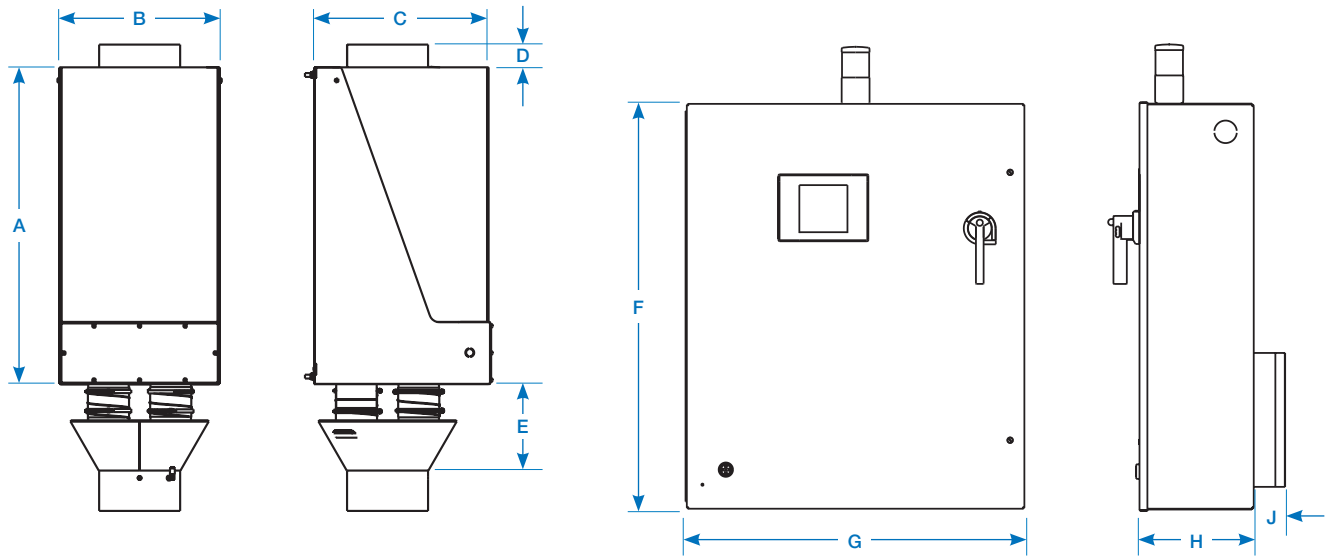
- ▶ **Individual heating units with precision heat control**
Allows you to heat hoppers individually for your unique drying needs, and displays setpoint and actual temperatures.
- ▶ **Safe surface temperature and operation**
Insulated heater box ensures safe surface temperature. Redundant safety switches and alarms help eliminate accidents.
- ▶ **Better productivity, less downtime, more quality parts**
Feature rich, the HTC's touch screen control when used in conjunction with Conair's Carousel Plus D Series dryers ensures that you are saving energy while properly drying material for quality parts.

Control	HTC
Features and Options	
Display / HMI screen	4-inch color
Temperature/dewpoint trending	●
Auto start/stop	7 day/time
English / metric units	●
Password protected	●
Temperature Setback (manual/auto)	●
Energy Usage Meter	●
Audible and Visual alarm	●
Drying Monitor	○
Material ready notification	○
Additional detailed trending screens	●



Specifications

HTC for Carousel Plus Dryers



Model HTC	HTC-30H*		HTC-60H*		HTC-90H*		HTC-120H*		HTC-180H*		HTC-270H*					
Carousel Plus dryer model	W600		W800 & W1000		W1600		W2400		W3200		W5000					
Performance characteristics																
Temperature range	150° - 375° F {66° - 191° C}															
Flow rate cfm	300		400		500		800		1200		1600		2500			
Pressure drop @ flow rate																
inches WC†	3.0		1.8		2.3		4.0		3.8		5.9		6.4			
{mm} WC†	{76.2}		{45.7}		{58.4}		{101.6}		{96.5}		{149.9}		{162.6}			
Dimensions inches {cm}																
Heater box dimensions																
Inlet size (OD)	8				12											
Outlet size (OD)	8				12											
A - Height	31.4 {79.8}		27.5 {69.9}		27.0 {68.6}		31.0 {78.7}		34.0 {86.4}		36.4 {92.5}					
B - Width	10.1 {25.7}		13.6 {34.5}		16.0 {40.6}		18.0 {45.7}		24.2 {61.5}							
C - Depth	10.7 {27.2}		10.9 {27.7}		16.0 {40.6}		17.0 {43.2}									
D - Height of discharge nozzle (above the heater box)	1.75 {4.4}		1.5 {3.8}		2.0 {5.1}		1.0 {2.5}		2.0 {5.1}		1.0 {2.5}					
E - Height of inlet nozzle (below the heater box)	10.6 {26.9}		7.1 {18.0}		8.0 {20.3}		10.0 {25.4}		13.0 {33.0}		15.4 {39.1}					
Installed weight lb {kg}‡	38 {17}		37 {17}		78 {35}		93 {43}		102 {46}		131 {59}					
Control center dimensions																
F - Height	24.0 {61.0}				36.0 {91.4}				48.0 {122.0}				60.0 {152.4}			
G - Width	24.0 {61.0}				30.0 {76.2}				36.0 {91.4}				42.0 {106.7}			
H - Depth					10.0 {25.4}				12.0 {30.5}							
J - Clearance for heat sink					3.0 {7.6}											
Installed weight lb {kg}	150.0 {68.0}				180.0 {81.6}				250.0 {113.0}				consult Conair			
Voltage full load amps §																
400V/3 phase/50 Hz	45		88		132		175		261		392					
460 V/3 phase/60 Hz	39		76		114		152		228		341					
575 V/3 phase/60 Hz	31		62		92		122		182		273					

Specification Notes

- * The HTC model number reflects the kilowatts of each unit. For example, HTC-60 has a 60 kilowatt heater.
 - † The unit of measure WC is water column.
 - ‡ Weights are approximate.
 - § FLA data for reference purposes only. Does not include any options or accessories on equipment. For full FLA detail for power circuit design of specific machines and systems, refer to the electrical diagrams of the equipment order and the nameplate applied to the machine.
- Specifications may change without notice. Consult a Conair representative for the most current information.

